

## Directions to True Blue/Esperanza Quarry, West Rutland, Vermont

### US 4

#### *East*

- => to West Rutland, exit 6, Business US 4/VT 3/VT 4A
  - \* 14.899 miles from NY/VT border
- Bear Right* ↗ onto ramp from US 4
- LT** ↖ northbound at end of ramp, Boardman Hill Road
  - \* northbound under US 4

### Boardman Hill Road

#### *North*

- => to Main Street intersection (about 1/2 mile)
- LT** ↖ westbound

### Main Street

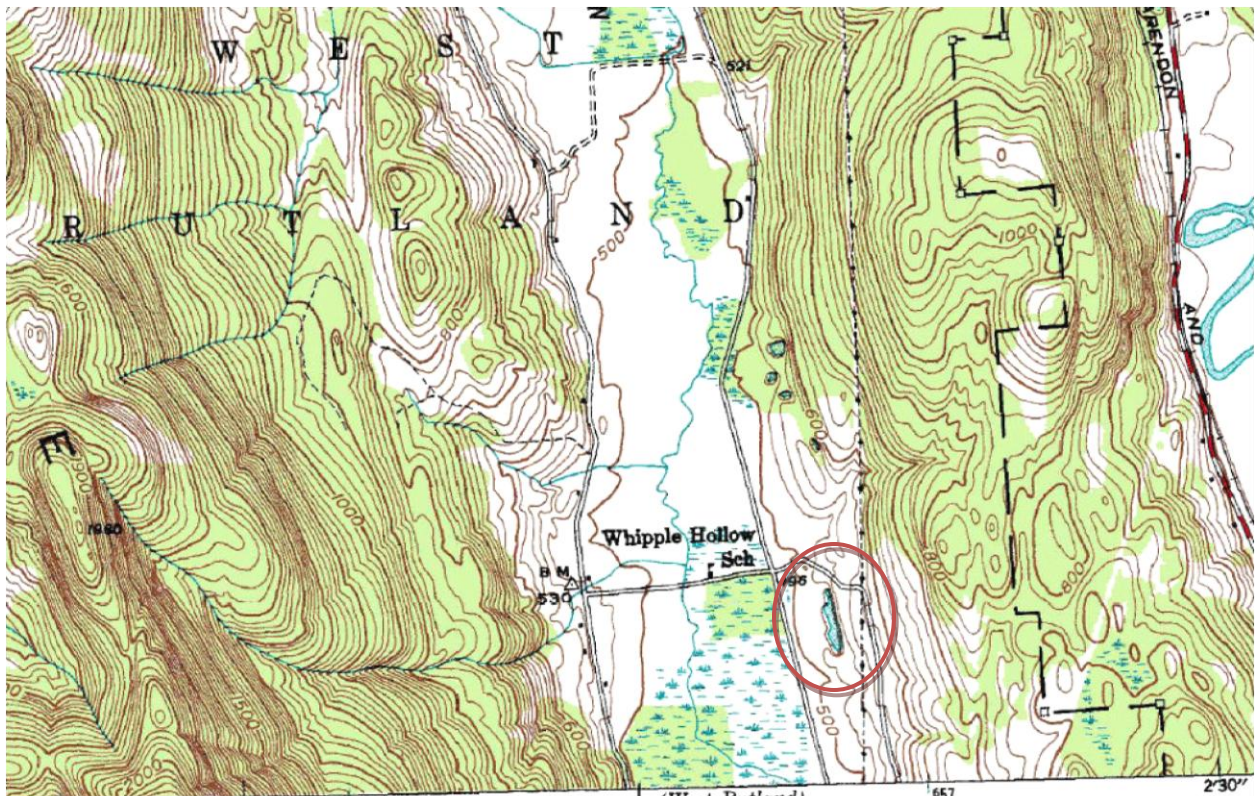
#### *West*

- => to Marble Street wye
- Bear Right* ↗ at first wye (continue on Main Street)
  - \* NAPA Auto Parts on right/Mobil gas station on left
  - \* stay on right
- Bear Right* ↗ at second wye, onto Marble Street

### Marble Street

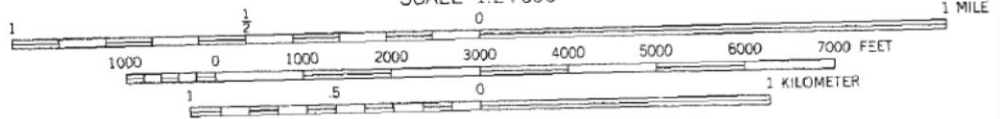
#### *North*

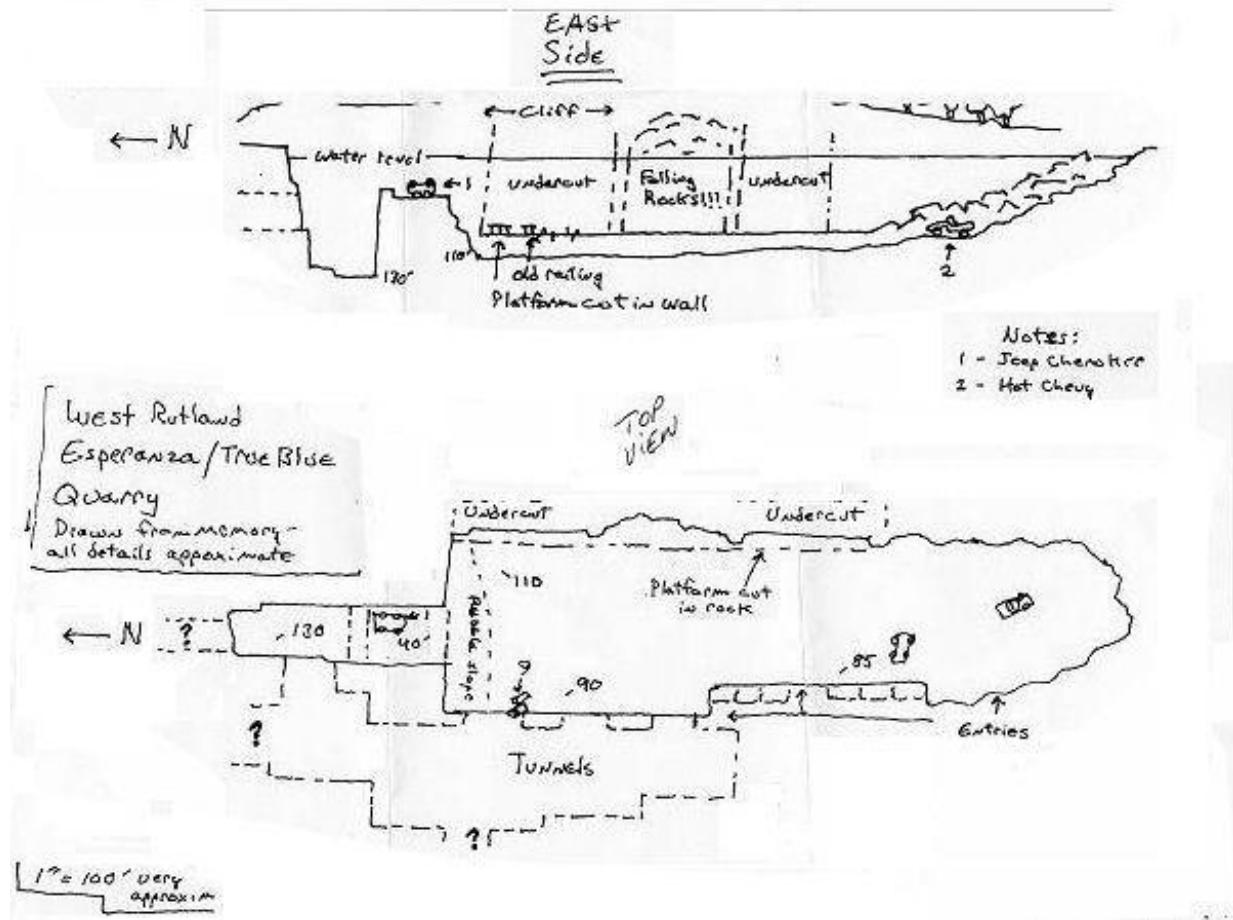
- => to parking about 3 miles on right
  - \* 4 large marble blocks at entrance



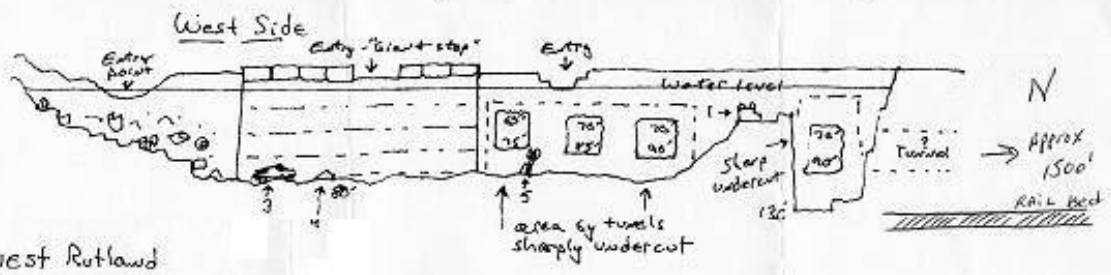
(West Rutland)  
6371 11 SE

SCALE 1:24,000

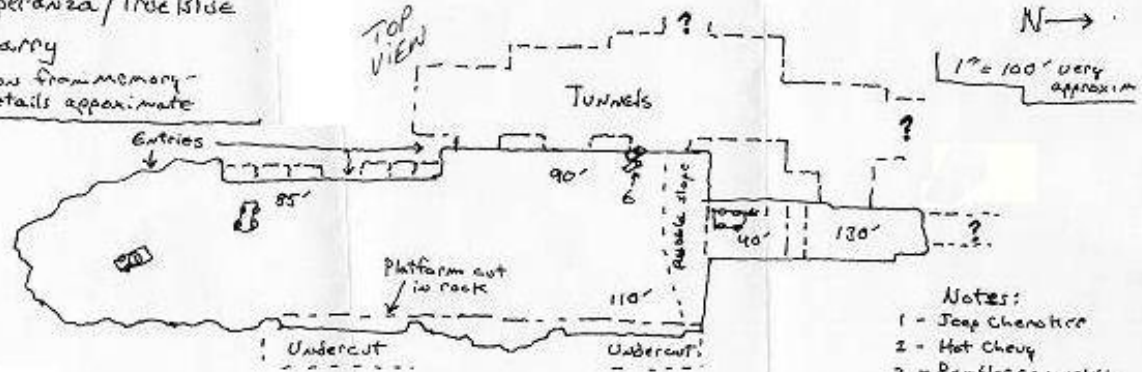




Entry is from this side, as marked "Entries"



West Rutland  
Esperanza/True Blue  
Quarry  
Drawn from memory -  
all details approximate



- Notes:
- 1 - Jeep Cherokee
  - 2 - Hot Chevy
  - 3 - Rambler convertible
  - 5 - Model T frame
  - 6 - Barrels for cable tracks
  - Y - Rowater Steved Wago.